

Being a parent is a tough job and if your child is struggling in school, it can feel overwhelming. If you need someone to talk to, your child's class teacher will always be happy to meet with you. If you think you need more support Mrs Rebecca Allen, (our SENDCo) or Miss Emma Miller (our headteacher) would be happy to help.

Contact school through: [admin@escrick.n-yorks.sch.uk](mailto:admin@escrick.n-yorks.sch.uk)  
Escrick Primary School Telephone : 01904 728570

North York SENDIASS offer free, impartial advice, information and support to families of children with SEND.

T: 01609 536923

<http://sendiassnorthyorkshire.co.uk/>



North Yorkshire's Local Offer for SEND contains lots of information and support.

<https://www.northyorks.gov.uk/send-local-offer>

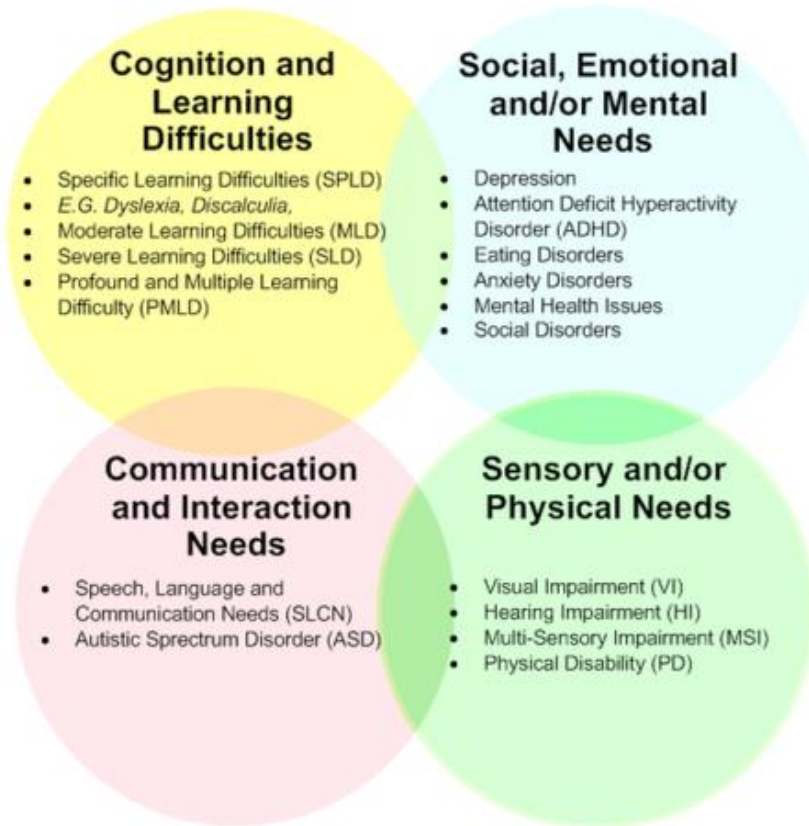
If you feel you need to make a formal complaint about SEND support you can write to our SEND Governor Robert Richards. Contact can be made through the school office.



## The Guide to SEND Support in Escrick CE Primary School

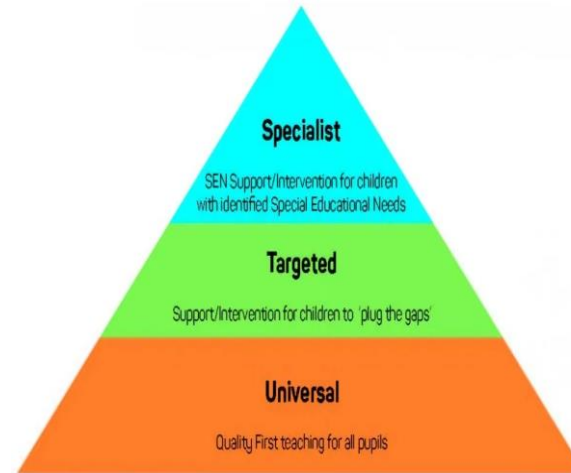


At times, some children need extra help in school. Children who experience difficulties may fall into one (or more) of four areas:



Our staff are trained to use many different approaches to teaching and learning so we can meet every child's needs, including those with SEND. Our SENDCo Mrs Allen has many years of experience supporting children with SEND and is in school every Tuesday, Wednesday and Thursday.

If you tell us you are worried about your child, we will observe them closely and work with them to see what may be causing any difficulties. We will share with you what we find out and what we will do next.



Most children's needs will be met by high quality teaching in class by our staff. Some children need extra help to keep up with their peers and may be included in interventions. Fewer children will need a personal plan with targets which are monitored by the SENDCo. Very few receive individually funded support through an Education Health and Care Plan.

If your child is being monitored on the Special Educational Needs Register, we will let you know. You can expect to meet your child's class teacher once a term to discuss targets and support. If we think another agency could help us to meet your child's needs, you will be asked to give your consent.

People we already work with

- Educational Psychologist
- Specialist Teachers (Autism, Dyslexia, Behaviour, Physical disabilities etc)
- NHS Health Services (speech therapy, occupational therapy and physiotherapy)
- Child and Adolescent Mental Health Services (Limetrees)

